

PitStop 25.03

What's new?



Contents

Introduction	3
What's new	4
Compare gamuts	4
Gamut Comparison in the Inspector	4
Gamut Comparison in an Action List	5
Resource Syncing in PitStop Server	6
Enabling Resource Syncing	6
Enabling Equipments	7
Selecting Cloud Resources in PitStop Server	7
Disable Actions	9
Variables in Dropdowns	10
Shading to path	13
Searching groups	14
Improvements	14
New default Preflight Profile	14
Demo	14
Bug Fixes	15



Introduction

Welcome to the “What’s new” document for PitStop Pro and PitStop Server 25.03.

This document offers a comprehensive overview of the latest version, emphasizing key enhancements and new features. The 25.03 release brings:

- A gamut comparison feature (Inspector & Action List)
- Resource Syncing for PitStop Server users on subscription
- The ability to disable Actions in Action Lists for easier debugging
- The possibility to set variables in dropdowns in various Actions
- The possibility to convert Shadings to paths
- A new default Preflight Profile for fixing Canva PDF files
- Improvements and Bug fixes

There are many ways that you can get more information and training about PitStop.

If you wish to register for our monthly PitStop training workshops you can do so by selecting the following link.

<https://www.enfocus.com/en/events/monthly-pitstop-pro-workshops>

If you would like to join the Official PitStop user group on LinkedIn, you can do so here.

<https://www.linkedin.com/groups/6801080/>

If you would like to access the PitStop sessions on our Enfocus eLearning platform you can do so here:

<https://www.enfocus.com/en/learn>

We hope you find the new functionality useful and that PitStop continues to be an essential part of your daily PDF production workflow.



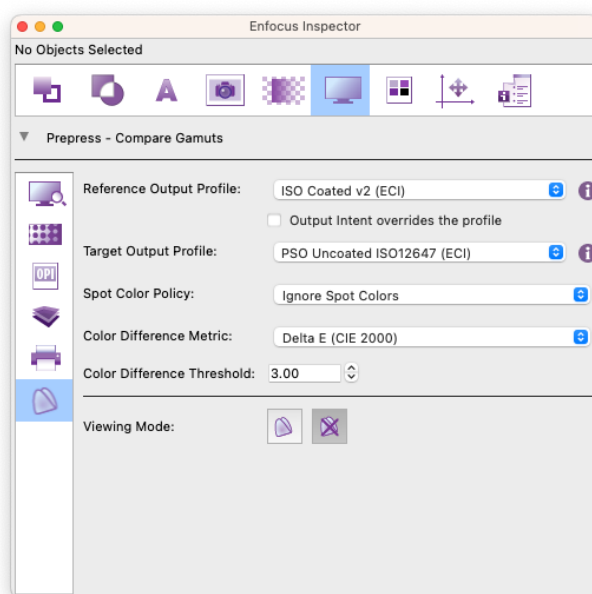
What's new

Compare gamuts

Our new Gamut Comparison feature enables users to visually compare color gamuts across different devices or color spaces. This powerful tool helps identify potential color conversion issues before they occur, ensuring color accuracy and consistency.

Gamut Comparison in the Inspector

Users can manually compare gamuts in the Inspector:



You can set the following parameters:

Reference Output Profile: Set the source profile for the color conversion.

Output Intent overrides the profile: Enable if you want the Output Intent to be used as the source profile for color conversion.

Target Output Profile: Set the target profile for the color conversion.

Spot Color Policy: Choose "ignore" to preserve Spot Color aspect or "Blend" if Spot Color should be converted.

Color Difference Metric: Choose the Delta E formula for color conversion.

Color Difference Threshold: Set the limit above which issues should be displayed.



Switch between the two viewing icons for displaying/hiding the heatmap.

The document with Gamut Comparison OFF



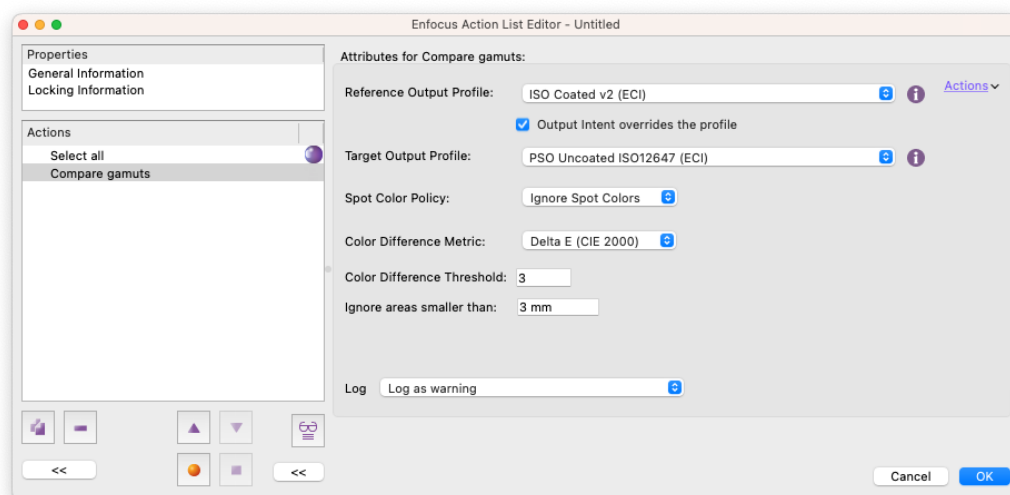
The document with Gamut Comparison ON



When Gamut Comparison is ON, a heatmap reveals the color differences issues from yellow (slightly over the threshold) to purple (a lot over the threshold). Areas below the threshold are not overlaid (the remaining dark parts that you can see on the right image).

Gamut Comparison in an Action List

The Gamut comparison also comes as an Action:

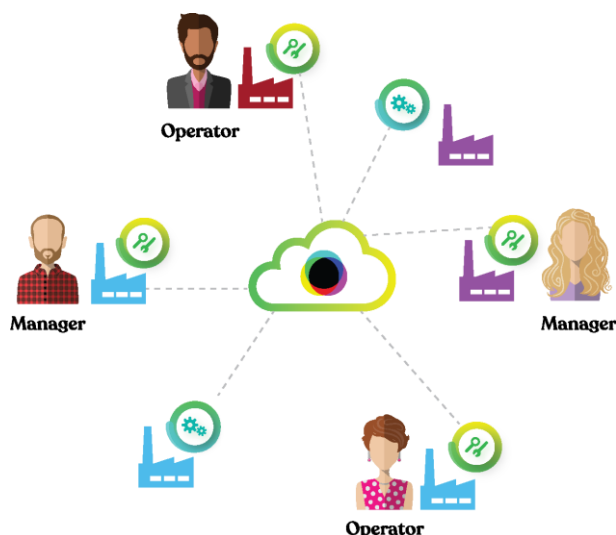


Parameters are the same. But in the Action, you can also decide to ignore areas smaller than a certain length. Such an Action List can be used to route jobs based on if files can be safely color converted or if they should be handled with extra care.



Resource Syncing in PitStop Server

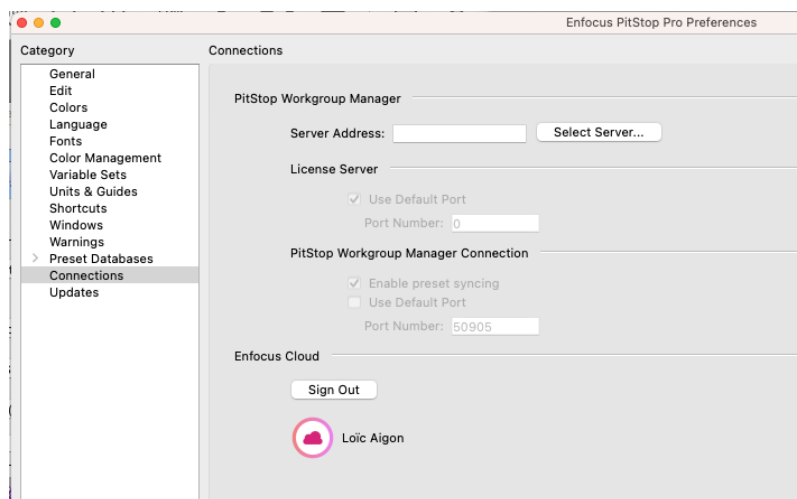
Resource Syncing was introduced in PitStop Pro 24.07. It is now possible to synchronize and share resources across your PitStop Pro users and your PitStop Server instances.



Thanks to Resource Syncing, any changes or edit in an Action List or a Preflight Profile can be instantaneously propagated across the users and machines ensuring the highest level of conformance in your production.

Enabling Resource Syncing

If you have not enabled Resource Syncing yet, you will have to connect to the Enfocus Cloud via the Connections pane in PitStop Pro preferences.



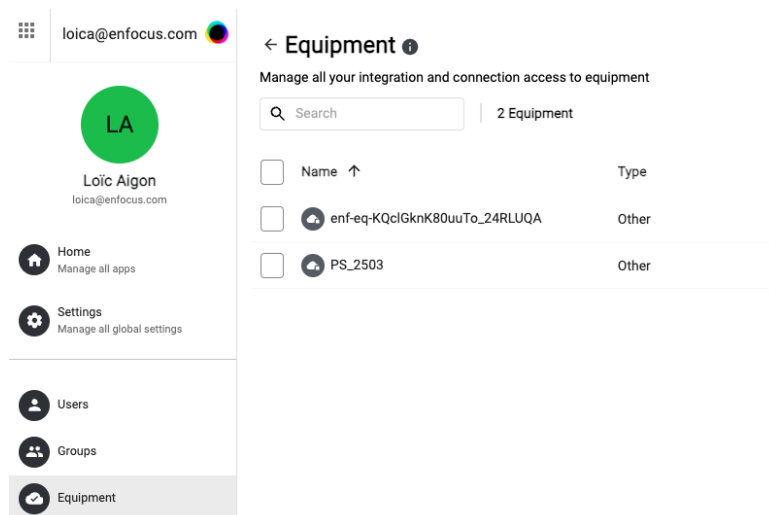
Please refer to the PitStop Pro documentation for this initial part of the process.



Enabling Equipments

While PitStop Pro deals with users, PitStop Server deals with machines. As such, to connect PitStop Server to your Enfocus Cloud, you need to create a special user: an equipment user.

To do this you need to go to your Cloud Account Admin space (Using PitStop Pro menu to access your Enfocus Cloud Admin). You then need to create a new equipment:



Once created, click on that new equipment and click on the “Generate new token” button. Save that token as you will need it later.

Finally, you need to add this equipment user to a group of users. Use the Librarian Group if you want to allow Switch users to edit, add or remove Action Lists and Preflight Profiles from Switch.

Select the “Read-Only” Group if you only want Switch users to select and work with your Action List or Preflight Profile but without any rights to add, remove or edit a resource.

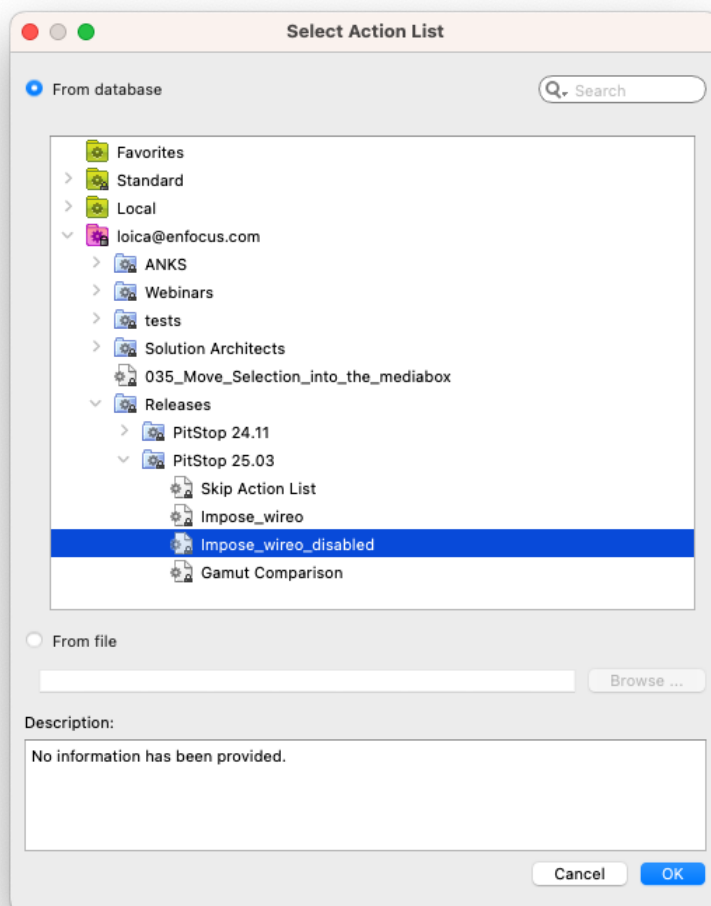
Selecting Cloud Resources in PitStop Server

The last step is to select the PitStop Server app in Switch and enter the token you previously saved:

Element type	Enfocus PitStop Server
Name	Enfocus PitStop Server
Description	
Flattening	No
Enable image input	Yes
<i>Use embedded dimensions if available</i>	Yes
<i>Default page dimensions</i>	Resolution
<i>Resolution</i>	72
Enfocus Cloud Connection
Preflight Profile	None
Manage Preflight Profiles...	



If everything was correctly set, you should now see a pink Cloud folder appearing in the list of Action Lists and Preflight Profiles. If that is not the case, refer to the documentation and ensure all steps have been carefully followed.



Note that this feature comes however with a few restrictions:

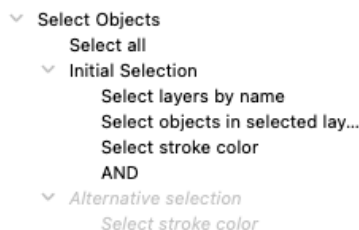
- You need a PitStop Server Subscription.
- It can only be enabled in the PitStop Server App, either using the Switch Core Engine which is part of the PitStop Server Subscription; or using any advanced Switch configuration.
- It is not enabled in the Standalone PitStop Server application even for users on subscription.
- In PitStop 25.03, the initial activation of Resource Syncing remains to be done using a PitStop Pro Subscription.
- In PitStop Server 25.03, only Action Lists and Preflight Profiles are synced. By contrast, PitStop Pro syncs Colors and Variable Sets on top of Action Lists and Preflight Profiles.



Disable Actions

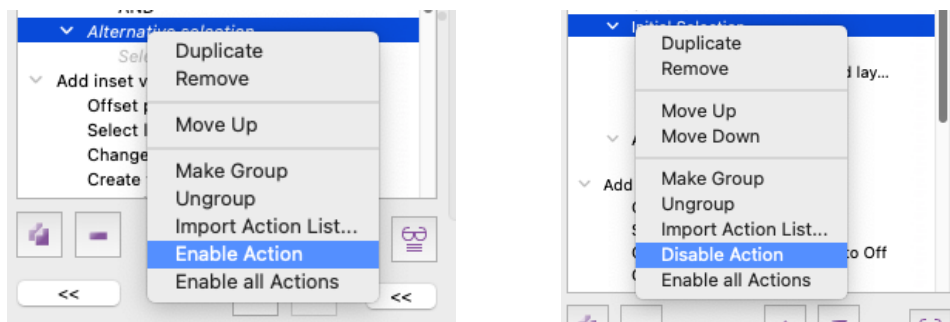
Building an Action List and getting it working as expected is sometimes a bit challenging. More than often users end up duplicating Action Lists for the sole purpose of testing different scenarios. Things can quickly become messy.

That is why we are introducing a new feature: "Disable Action" that will allow users to simply let PitStop know which Actions should be ignored during the execution of the Action List. Look at the following example:

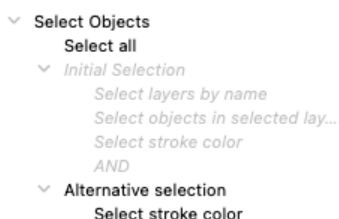


The grayed/italic text represents an Action that is currently disabled, and as such ignored. In this specific case, PitStop will execute the Actions contained in the group "Initial Selection" but not those in the group "Alternative Selection."

If a user would now want to test the opposite, they can disable the Actions in the "Initial Selection" group and enable the Actions in the "Alternative selection" group.



Therefore, the Action List now presents different enabled/disabled Actions and PitStop will this time only process the Actions in the "Alternative selection" group:



It is also possible to "Enable all Actions." This will make every single disabled Action, enabled again.

Finally, note that disabling an Action is persistent. It means that it will remain disabled once an Action List is saved and closed. That way, you can still re-enable later if needed, or safely removed once you got the confidence you will no longer need those Actions.



Variables in Dropdowns

Following with our plans to make PitStop Variable aware wherever it is possible, we are bringing the possibility to use variables in dropdowns. However, this first release comes with a few limitations. Users can only set variables on dropdowns in Action Lists and some dropdowns cannot use variables yet (ex: for ICC Profiles selections...).

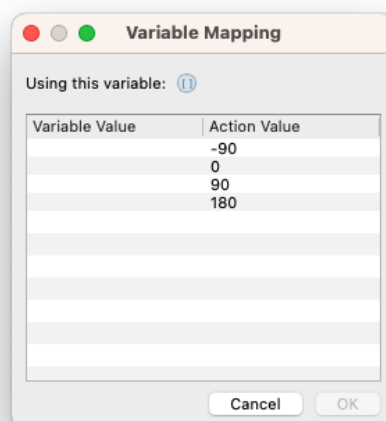
When a dropdown can use a variable, you will see the traditional "variable" icon next to it:



Add variables on a dropdown requires an extra step. Keep in mind that dropdowns in PitStop use internally known values. For example, in the above example, setting the page rotation can only set one of those four specific values: 0°, 90°, -90° and 180°.

To ensure that using a variable can only result in one of those specific values, an extra mapping is necessary. With that mapping, you are letting PitStop know that when the variable passes the value "whatever" to the dropdown, PitStop should use a specific value of the dropdown.

This is why clicking on the variable icon opens the following new mapping dialog:



The right column presents the values that PitStop will use internally. Those you cannot change. On the left, the "Variable value" let you indicate which values are going to be used for the mapping.



If you first select a variable from a variable set, do not expect that your variables will automatically populate. You need to click on the left fields and type in the variable values like for example:

Variable Mapping

Using this variable: (orientation)

Variable Value	Action Value
90° on the left	-90
Make it normal	0
90° on the right	90
Upside Down	180

Cancel OK

Now PitStop knows that when it will receive any of those values, like for example “90° on the left”, it means that the value “-90” should be used internally.

This mapping is not yet sufficient because you still need a variable set and a variable. Keep in mind that the variable value must match one of the entries set in the mapping window (Variable Value), or the execution will fail

Variable Definition

Name: orientation

User Readable Name:

Type: Constant Text

Description:

Variable Value

Default Value: Make it normal

Interactive Smart Preflight

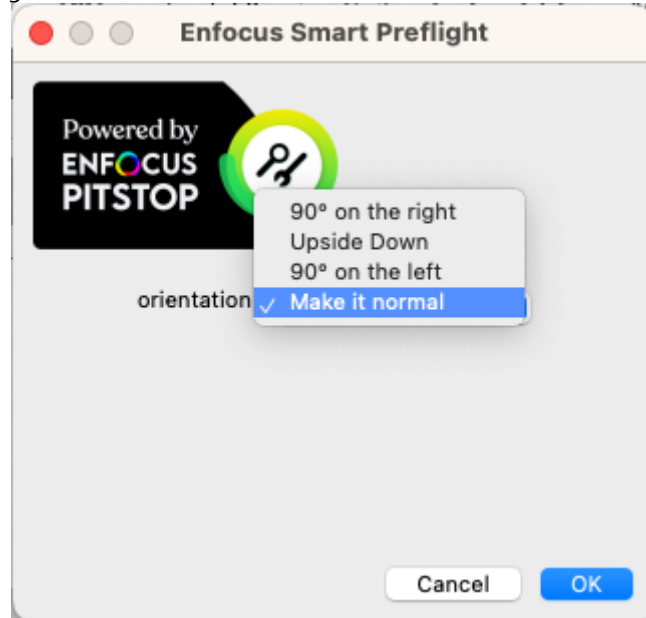
☐ Allow manual input

☒ Show a predefined list of values (one item per line, empty line for separator)

90° on the right
Upside Down
90° on the left
Make it normal



Once the mapping and the variables set/variable is properly set, running the action will result in the following dialog:



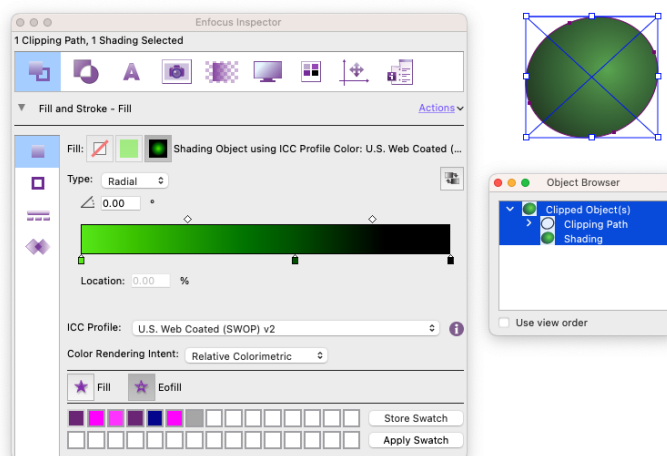
Future releases will see more variability over PitStop. If you want us to accelerate on some specific areas where variables cannot be used, do not hesitate in letting us know.



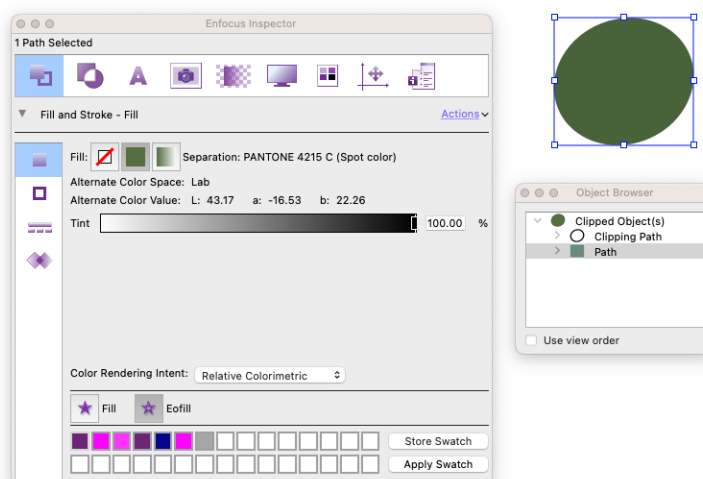
Shading to path

With PitStop 25.03, it is now possible to convert Shadings to paths. Previously, you could only convert Shadings to images. But now you can keep the line art and change its graphic properties.

See the following Shading Object:



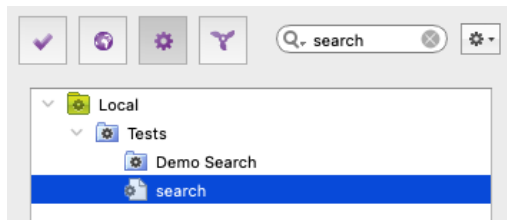
The new “Convert Shading to path” Action now can convert the Shading object to a path. You can then use that path and change its graphic properties. For example, here we changed the Shading to a specific Spot Color.





Searching groups

Up to PitStop 25.03, the Search feature would only return resources (Action Lists, Preflight Profiles...). If a group's name would match the search query, it was ignored. This is no longer the case now and matching groups are displayed alongside resources.



While searching "search", both the resource "search" and the group "Demo search" were found and are now displayed.

Improvements

In PitStop 25.03, we worked on the following improvements:

- Fixing edge-cases for the "Fill to Stroke" Action introduced in PitStop 24.03
- Automatic reconstruction of curves when converting fills to stroke
- DeviceLink conversion can now be done regardless of CMM is set or not
- Indexed PNG images are now supported for input in PitStop Server

New default Preflight Profile

1 default Preflight Profile has been added to PitStop 25.03

Demo

- **Just make my Canva PDF work!**

Canva PDF files are found more frequently every day. They often carry a lot of issues, and we wanted to give you some help with a ready-made Preflight Profile addressing those problems.

Note that during beta testing, some users reported they may prefer to not have impure black fixed as it can make the full color management of Canva PDF files hard. In this case, feel free to deactivate the EXTRA Change "If it looks Black and convert to Black".

This Preflight Profile has been tested with many users and feedback was good. So, we hope it will be useful for you too. Should this not be the case, report any adjustments you think would be useful.



Bug Fixes

Issue	Product	Summary
ENFP-10702	PitStop Server	decomposed Unicode character in filename issues
ENFP-11839	PitStop Server	File with å in the file name can't be processed using the PitStop Server configurator
ENFP-12210	PitStop Pro	placeholder AE-29626 (German) - Pitstop Problem - Reading EAN Codes
ENFP-12198	PitStop Pro	Fill to stroke failures
ENFP-12246	PitStop Pro	PitStop Pro 24.11 crashes when clicking the 'Remap color' action in the provided Action List
ENFP-12228	PitStop Pro	Text is not extracted - font issue?
ENFP-10557	Pitstop Server	(PitStop Library error code 8003): Basic error. when adding XML extra dataset in configurator
ENFP-12268	PitStop Server	[Core] PitStop Server App Fails
ENFP-12254	PitStop Pro	Select Outside Contour - Selecting inside contour
ENFP-12158	PitStop Pro	Extra object appearing when running Action List
ENFP-12272	PitStop Pro	Can't start Acrobat with Japanese account name of Windows
ENFP-10340	PitStop Server	Temp files not cleaned up by PitStop Server
ENFP-6330	PitStop Pro	Floating window does not disappear when switching applications