




Metrix Release Notes Version 25.1

2026

Confidential - not to be distributed outside your organization without prior permission.

Copyright © 2004 - 2026 by CAI Software. All Rights Reserved.

 Metrix | Release Notes Version 25.1

January 2026

Document Version 1.0

This publication is protected by copyright, and all rights are reserved. No part of this document may be reproduced or transmitted in any form or by any means, for any purpose, without the express prior written consent of Graphic Communications. Information contained in this document is subject to change without notice and does not represent a commitment on the part of Graphic Communications.

Trademarks

Avanti, DirectSmile, Digital StoreFront, EPMS, iQuote, MarketDirect Cross Media, MarketDirect Fulfilment, Metrix, Monarch, Pace, PrintSmith, PrintStream, Process Shipper, Tharstern, and Technique are trademarks of Graphic Communications (division of CAI Software, LLC) and/or its wholly owned subsidiaries or affiliates in the U.S. and other countries. Auto-Count and PrintFlow are trademarks of ePS Packaging US, LLC.

All other terms and product names mentioned may be trademarks or registered trademarks of their respective owners and are hereby acknowledged.

Table of Contents

Table of Contents	3
Introduction	4
Additional Sources	4
Contact Information	4
System Requirements.....	5
Metrix 25.1 system requirements:	5
Licensing	8
New Features	9
Tiling for Large Format Media	9
Preparing to Create Tiled Products.....	9
Create Tiled Products	11
Working with Tiled Products	16
Enhancements.....	19
Webs and Binding Method added to Multi-Web Presses	19
Security Enhancement - Apache ActiveMQ Upgrade	19
Support for Azure/Entra's Graph API	19
Windows Server 2025.....	20
Resolved Issues	21
Auto Plan - Maximum Products per Layout	21
Auto Plan – With Die Cutting Tool	21
Auto Plan – Metrix Automation Server.....	21
Export – Specific Imposed Layout	21
Mac OS Copy Keyboard Shortcut.....	21

Introduction

Metrix is an industry-leading job planning engine that transforms big data into actionable data in the most proven end-to-end integrated solution with a holistic view into manufacturing. With over 1,200 Metrix users in 25 countries and 20 years of continuous, aggressive development, Metrix is recognized as the de facto industry standard for dynamic, intelligent production planning, and automated imposition. Metrix 25.1 introduces new features and enhancements and addresses issues found in previous releases.

Additional Sources

For additional information, see the [Metrix 25.1 User Guide](#).

Contact Information

Metrix Support

Web Site:	communities.epssw.com
US Phone:	(412)-785-1699
UK Phone:	+44 (1246) 927830
E-Mail:	metrix.support@epssw.com

Metrix Support hours are 8AM CET to 5pm ET Monday – Friday. You may contact support at the above numbers or via our customer portal at communities.epssw.com.

Note For problems involving infrastructure (e.g., computers, networks, operating systems, backup software, printers, third-party software, etc.), contact the appropriate vendor. Graphic Communications cannot support these types of issues.

Professional Services

E-Mail:	myepsservices@epssw.com
---------	--

Note Professional Services can help you perform software installations, upgrades, and updates. This group can also help you implement, customize, and optimize your software plus offer a range of training options.

System Requirements

Please ensure your system is running on one of the supported operating systems listed below before beginning the installation process.

Metrix 25.1 system requirements:

- Metrix 25.1 requires 64-bit systems. It will not run on 32-bit systems.

Note Microsoft ended support for Windows 7, Windows 8, Windows 8.1, Windows 10 and Windows Server 2008, and Windows Server 2012R, so Metrix 25.1 does not support these platforms. We recommend you upgrade your system to Metrix current minimum system requirements.

For more information on the installation process, please see the [Metrix 25.1 Installation Guide](#).

Windows Minimum System Requirements for Metrix 25.1

Changes from 24.1 are **highlighted**:

<i>Processor</i>	Intel compatible Minimum 2-core and 4-thread processor for rectangular products Minimum 4-core and 8-thread processor for Irregular Shape products Minimum 4-core and 8-thread processor for Super Wide Format Recommended: 8-core and 16-thread
<i>Processor Speed</i>	2.8 GHz minimum
<i>Windows Operating System</i>	Microsoft Windows 11 (64-bit) Microsoft Windows Server 2025 (64-bit) Microsoft Windows Server 2022 (64-bit) Microsoft Windows Server 2019 (64-bit) Microsoft Windows Server 2017 (64-bit) Microsoft Windows Server 2016 (64-bit) Microsoft SQL Server 2014 SP3 and SP4 (64-bit) Microsoft SQL Server 2016, 2017, 2019, 2022 and 2025
<i>Memory</i>	Metrix Client – 4 GB RAM Metrix Data Server – 2 GB RAM Automation Server Pro – 16 GB RAM (Minimum) to 4 GB RAM per CPU Core (64 GB RAM Maximum) Automation Server Enterprise – 64 GB RAM (Minimum) to 4 GB RAM per CPU Core (256 GB RAM Maximum) Automation Server with Non-Rectangular module – 8 GB RAM (Minimum) and 1 Dual-core Processor (Minimum) Automation Server with Display Graphics/Media Optimization/Super Wide Format – 16 GB RAM (Minimum) (32 GB RAM and 16-core, 32-thread processor or better recommended) eFlow License Manager – 256 MB RAM Notes

	<p>If you use the Content Previews module, the minimum RAM requirement for Metrix is 6 GB with 8 GB or more recommended.</p> <p>The Content Previews module is processor intensive, so a fast multi-core processor is recommended. If PDF content is being accessed across a LAN, gigabit network speeds are recommended when accessing large content files.</p> <p>If you use Display Graphics/Media Optimization, the minimum RAM requirement for Metrix is 16 GB.</p> <p>If you use Display Graphics/Media Optimization with a Super Wide Format, a 16-core processor is recommended.</p>
<i>Monitor Resolution</i>	1280 x 1024 or higher
<i>Network (multi-user)</i>	Static IP address for the Data Server, eFlow License Manager, and Automation Server. Automation Server runs as a service and needs a local administration account.

MacOS Minimum System Requirements for Metrix 25.1

Changes from 24.1 are **highlighted**:

<i>Processor</i>	<p>Intel Core 2 Duo</p> <p>Minimum 2-core and 4-thread processor for rectangular products</p> <p>Minimum 4-core and 8-thread processor for Irregular Shape products</p> <p>Minimum 4-core and 8-thread processor for Super Wide Format</p> <p>Recommended: 8-core and 16-thread processor</p>
<i>Processor Speed</i>	2.8 GHz minimum
<i>Macintosh Operating System</i>	<p>OS 26 (Tahoe)</p> <p>OS 15 (Sequoia)</p> <p>OS 14 (Sonoma)</p> <p>The following are no longer supported having reached end-of-life status prior to this release. We recommend you upgrade your system to Metrix current minimum system requirements:</p> <p>OS 13 (Ventura)</p> <p>OS 12 (Monterey)</p> <p>OS 11 (Big Sur)</p> <p>OS X 10.15 (Catalina)</p> <p>OS X 10.14 (Mojave)</p> <p>OS X 10.13 (High Sierra)</p> <p>OS X 10.12 (Sierra)</p> <p>OS X 10.11.x (El Capitan)</p> <p>OS X 10.10.x (Yosemite)</p> <p>OS X 10.9.x (Mavericks)</p> <p>Notes</p>

	<p>Metrix requires Java 17. Metrix installs and uses this version internally, regardless of the Java version that is installed on the computer.</p> <p>If you see the Content Previews module, the minimum RAM requirement for Metrix is 6 GB with 8 GB or more recommended.</p> <p>The Content Previews module is processor intensive, so a fast multi-core processor is recommended. If PDF content is being accessed across a LAN, gigabit network speeds are recommended when accessing large content files.</p> <p>If you use Display Graphics/Media Optimization, the minimum Ram requirement for Metrix is 16 GB.</p> <p>If you use Display Graphics/Media Optimization with a Super Wide Format, a 16-core processor is recommended.</p>
<i>Memory</i>	<p>Metrix Client – 4 GB RAM</p> <p>Metrix Data Server – 2 GB RAM</p> <p>eFlow License Manager – 256 MB RAM</p>
<i>Monitor Resolution</i>	1280 x 1024 or higher
<i>Network (multi-user)</i>	Static IP address for the Data Server and eFlow License Manager.

Licensing

Upgrade your eFlow License Manager to the latest version to ensure optimum performance and security. You can download the eFlow LIM installer for Windows and Mac using the following links:

[eFlow 12.3.123045.33 MacOS LIM.zip](#) (Mac installer).

[eFlow 12.3.123045.33 Win LIM.exe](#) (Windows installer).

Notes At the time of this release, the latest version of eFlow LIM is 12.3.123045.33.

If you are installing eFlow LIM on any version of Mac OS, see the [Metrix 25.1 Installation Guide](#) for instructions and important information.

Important considerations:

- Always make a backup of your database before upgrading Metrix.
- If you are upgrading from Metrix 2018 or earlier with *all* database types, you must install Metrix 2019.2 and upgrade the database to that version before installing Metrix 25.1 and upgrading the database again.
- If you are running Metrix with a HSQL database (Metrix Database Server or embedded database) and are upgrading from Metrix 2019.2 or later, you may see a message that informs you the database must be upgraded or that Metrix cannot find the database. In that case, you must first install Metrix 22.2 and upgrade the database to that version before installing Metrix 24.1.
- Prior to Metrix 22.2, Metrix installed in C:\ProgramData\EFI\Metrix and C:\Program Files\EFI\Metrix on Windows and /Applications/EFI/Metrix on MacOS; Metrix 22.2 and newer installs in C:\ProgramData\ePS\Metrix and C:\Program Files\ePS\Metrix on Windows and /Applications/ePS/Metrix on MacOS. If you are upgrading Metrix from an earlier version, make a backup of your Data and Marks folders and, after installing Metrix 24.1, place those copied folders in C:\ProgramData\ePS\Metrix (Windows) or /Applications/ePS/Metrix (Mac). See the [Metrix 25.1 Installation Guide](#) for more information.

New Features

Tiling for Large Format Media

Metrix 25.1 introduces the ability to tile large format media. When users have a project larger than the printable media size, they now have the option to apply tiling to print it across multiple layouts.

Preparing to Create Tiled Products

Press Setup

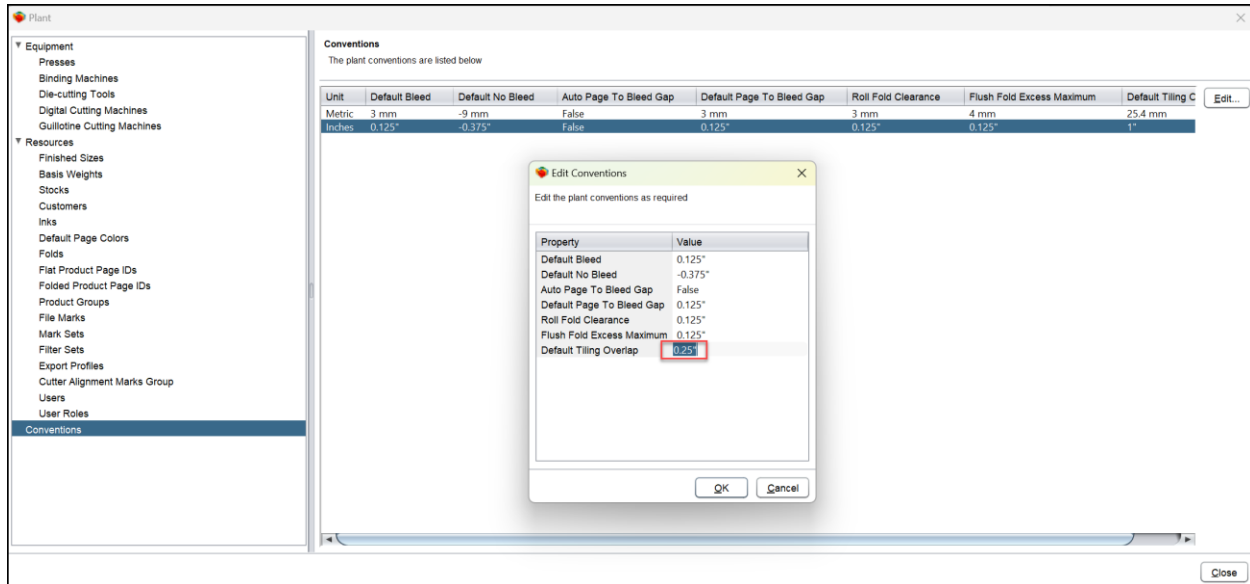
Roll Fed, Digital Presses can have the Tiling feature applied. Select **Settings > Plant > Equipment > Presses** and either **Add New** or select and create a **Variant** of an existing Press. Enter the appropriate details for your Press, including:

1. **Roll Fed > True** (otherwise the Tiling option is not available).
 2. **Digital Press > True** (otherwise the Tiling option is not available).
 3. The **Maximum Sheet Across Cylinder**, this must not exceed 25 meters or 984.25 inches. If you exceed this limit, an Error Message is displayed, and you cannot save the record.
 4. The **Maximum Cutoff**, this must not exceed 25 meters or 984.25 inches. If you exceed this limit, an Error Message is displayed, and you cannot save the record.
 5. **Tiling > True**.
-

New Variation Press	
Name Wide Format Tiling Press1	Device ID Wide Format Tiling Press1
Manufacturer	Model Name
Model Number	Serial Number
Roll Fed <input checked="" type="radio"/> True <input type="radio"/> False 1	Digital Press <input checked="" type="radio"/> True <input type="radio"/> False 2
Minimum Sheet Across Cylinder 3	Maximum Sheet Across Cylinder 984 3
Minimum Cutoff 3	Maximum Cutoff 984 4
Cutoffs/Repeat Variable <input <="" td="" type="button" value="Select..."/> <td>Tiling <input checked="" type="radio"/> True <input type="radio"/> False 5</td>	Tiling <input checked="" type="radio"/> True <input type="radio"/> False 5
No Image Lead Edge 0	No Image Sides 0
No Image Trailing Edge 0	No Page Lead Edge 0
No Page Sides 0	No Page Trailing Edge 0
Press Guid Allowances	Minimum Stock Thickness 0.0004
Maximum Stock Thickness 6	Press Uses Plates <input type="radio"/> True <input checked="" type="radio"/> False
Cost Per Plate 0	Plate Brand
Plate Dimension Across Cylinder 0	Plate Dimension Around Cylinder 0
Plate Thickness 0	Perfects <input type="radio"/> True <input checked="" type="radio"/> False
Minimum Stock Thickness Perfecting 0.0004	Maximum Stock Thickness Perfecting 6
Flip Components When Perfecting <input type="radio"/> True <input checked="" type="radio"/> False	Double Sided No Gripper Change <input type="radio"/> True <input checked="" type="radio"/> False
Ink Units Defined <input type="radio"/> True <input checked="" type="radio"/> False	Ink Units 0
Max Front Ink Units 0	Max Back Ink Units 0
OK Cancel	

Default Overlap for Tiled Products

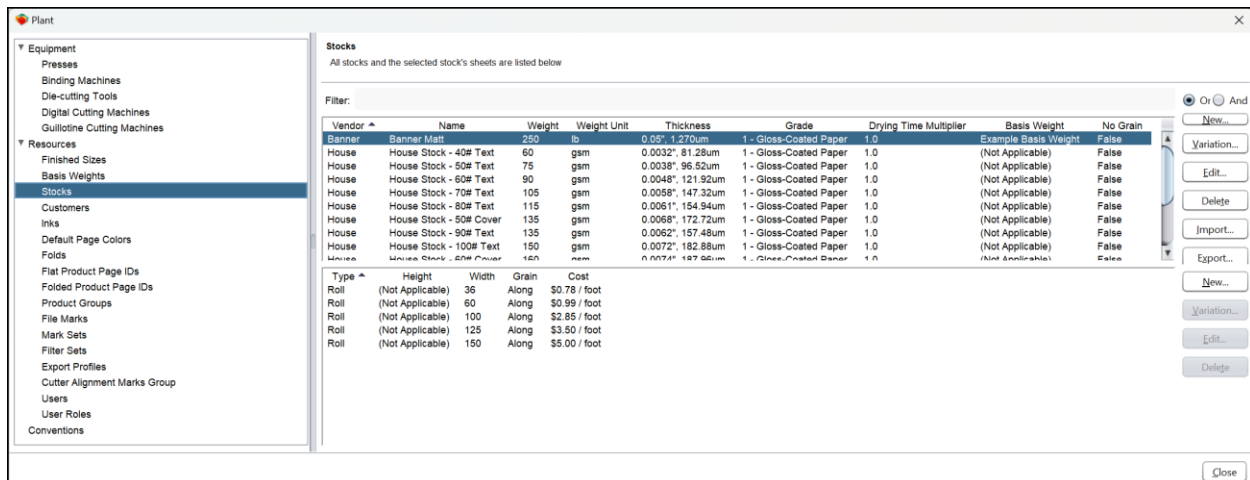
A new setting has been introduced for tiled products. Navigate to **Settings > Plant > Conventions** and enter a value for **Default Tiling Overlap** in the default measurement units (values must range between 0 and 12"/304mm):



This can be overridden for individual products.

Stock for Tiled Products

As with all Presses, ensure that appropriate Roll Stocks are available for Large Form printing by checking **Settings > Plant > Resources > Stocks**:



Create Tiled Products

Add Project

Select **File > New Project** and:

1. Select **Flat Product Type**.
2. Select **Single Sided Product Type**.

3. Click **Browse Files** and select your large format content file:

- a. The **Product Name** is added as the file name.
- b. The **Finished Size** is added as a custom File Size.
- c. The **Width** is shown.
- d. The **Height** is displayed.

If the content file is to be added later:

- Enter a **Product Name**.
- Select **Finished Size > Custom** and enter a **Width** and **Height**.

4. Complete the additional fields:

- **Project Id, Project Name** and select the Project Type – these are compulsory.
- **Required Quantity**.
- Select the **Grain**.
- Select the **Customer**.
- Choose the appropriate **Stock**.

5. Click **Create**.

New Project

Just upload your files to start working on a project!

146by194.pdf

Page Count 1

Trim Size: 146" x 194"

Media Size: 146" x 194"

Die Color: ?, die size 0" x 0"

Clear

View

Select Your Product Type

Flat

Folded

Bound

Diecut

Irregular Shape

No Product

Single Sided

Double Sided

Project ID

eg25

Project Name

eg25

Project Type

Production

Product Name

146by194

Required Quantity

1,000

Grain

Either-All Same

Customer

New Day Printing, Jim Bobsky

Stock

Banner Matt 250lb

Finished Size

File, 146 x 194

Width

146

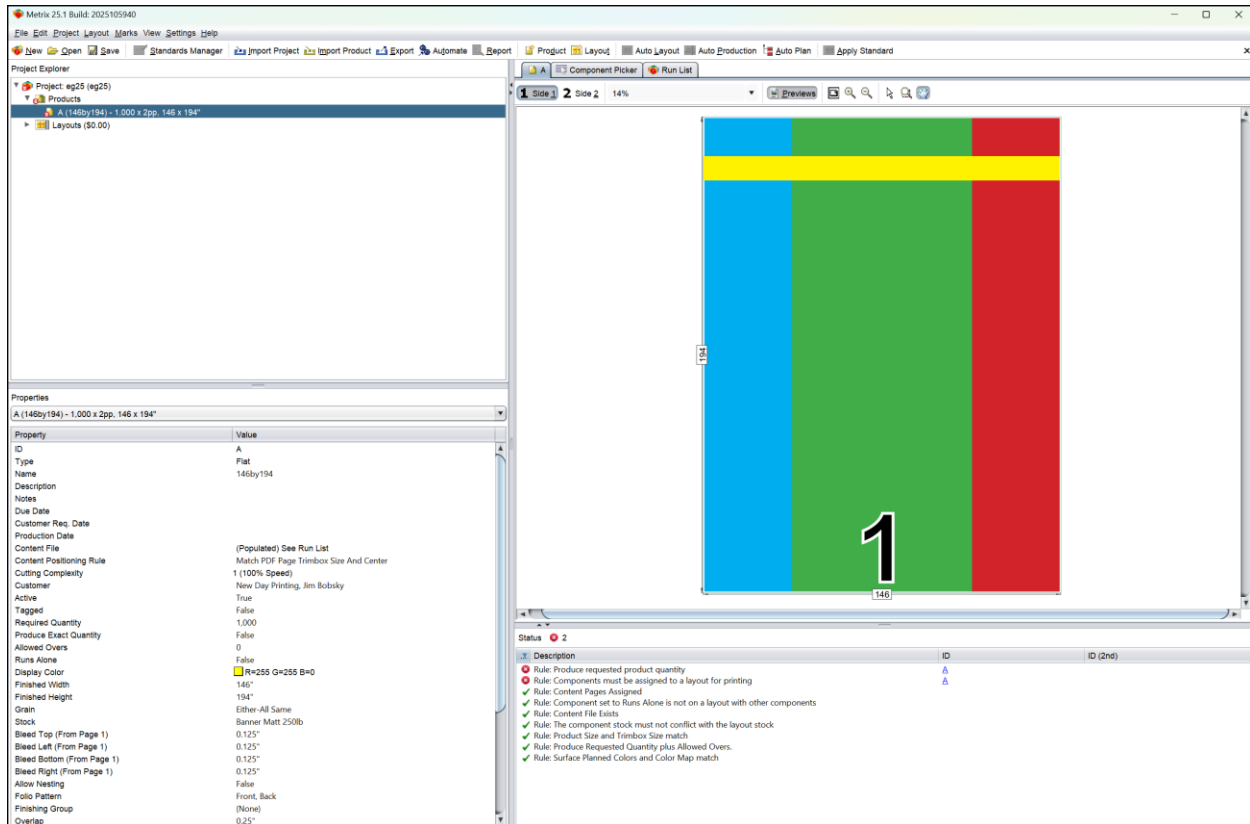
Height

194

Create

Cancel

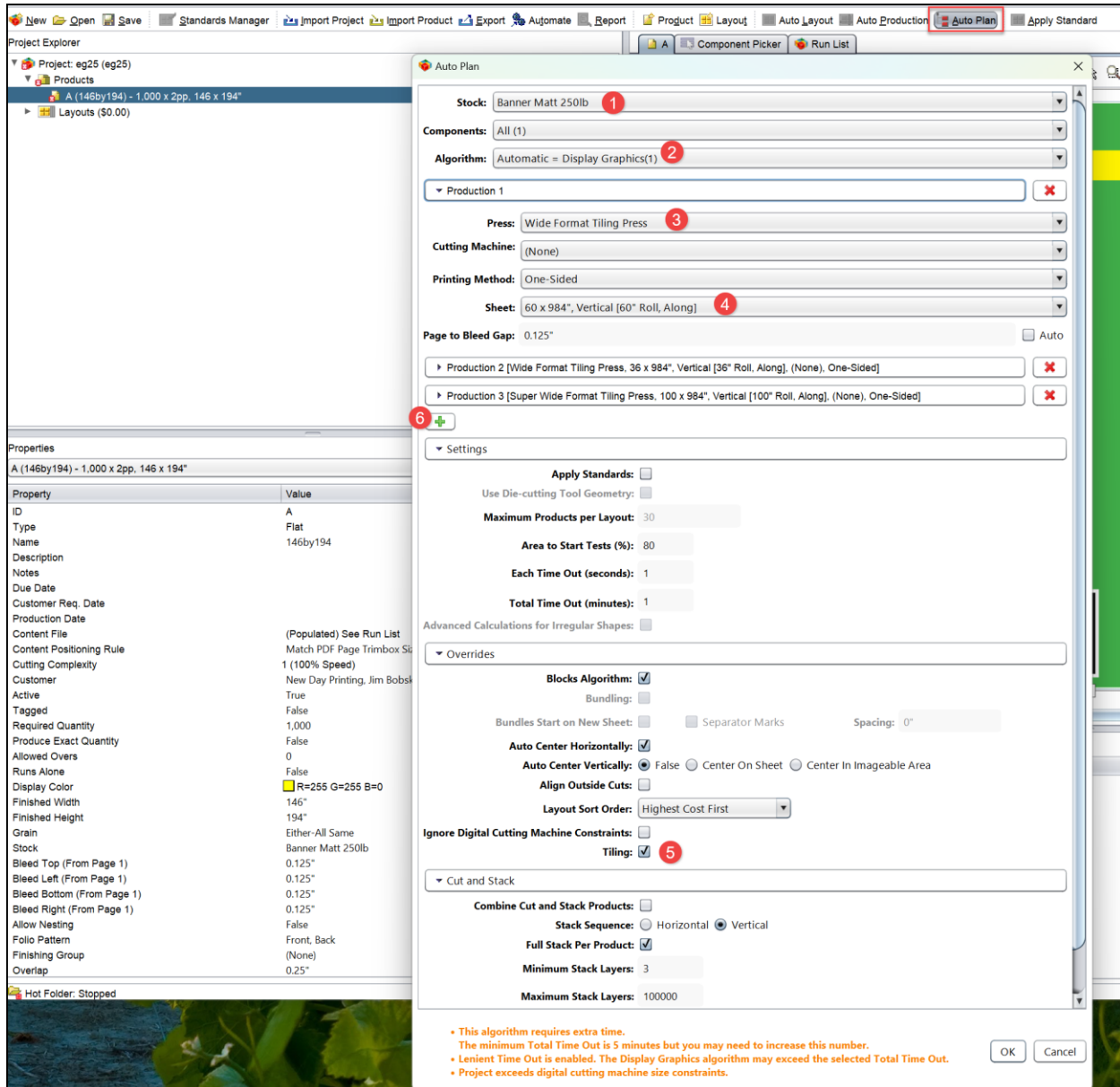
The new Product is added to the Project:



Create Layouts

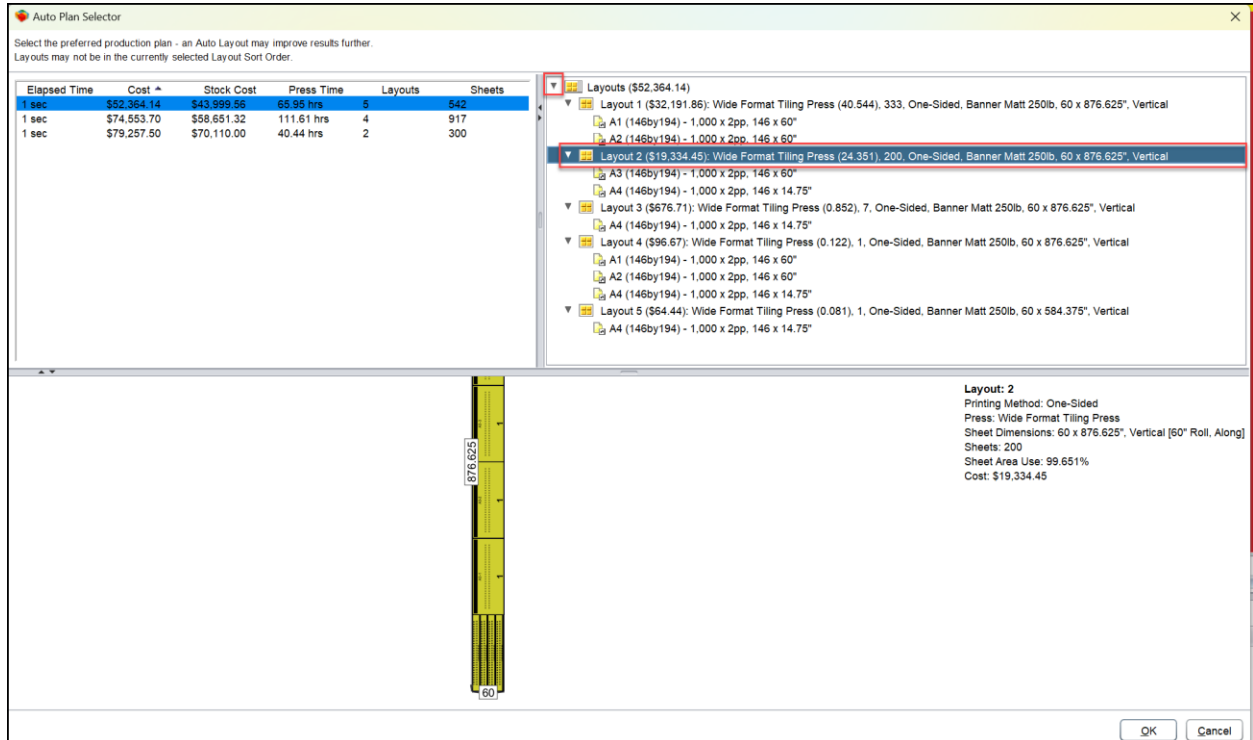
To create one or more layouts, select the Product and click **Auto Plan**. Select the appropriate options, including:

1. Select appropriate **Stock** type.
2. Select the **Display Graphics** algorithm. The option to select the Tiling Override is only available with this algorithm.
3. Choose an appropriate Digital, Roll Fed **Press**.
4. Select an appropriate **Sheet** stock.
5. Select **Tiling**.
6. You have the option to **Add** additional sets of **Production** options to compare.



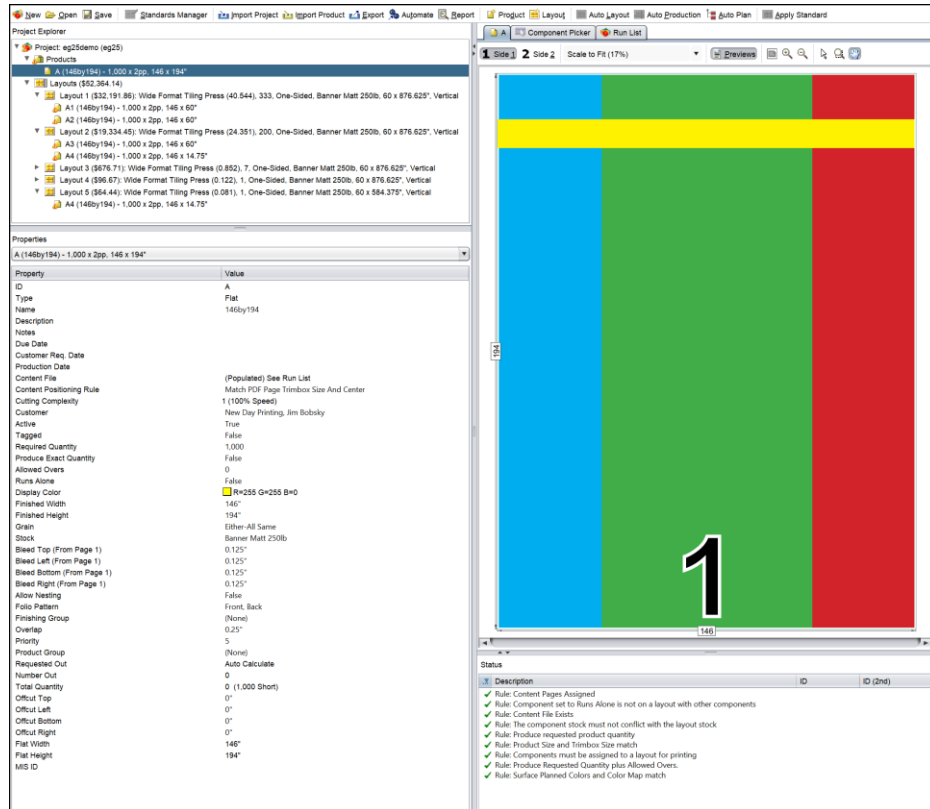
When you click **OK**, the plan/s are generated.

Select a plan and expand the **Layouts** to view the components Click **OK** with your chosen Plan selected to add the layouts to the Product:

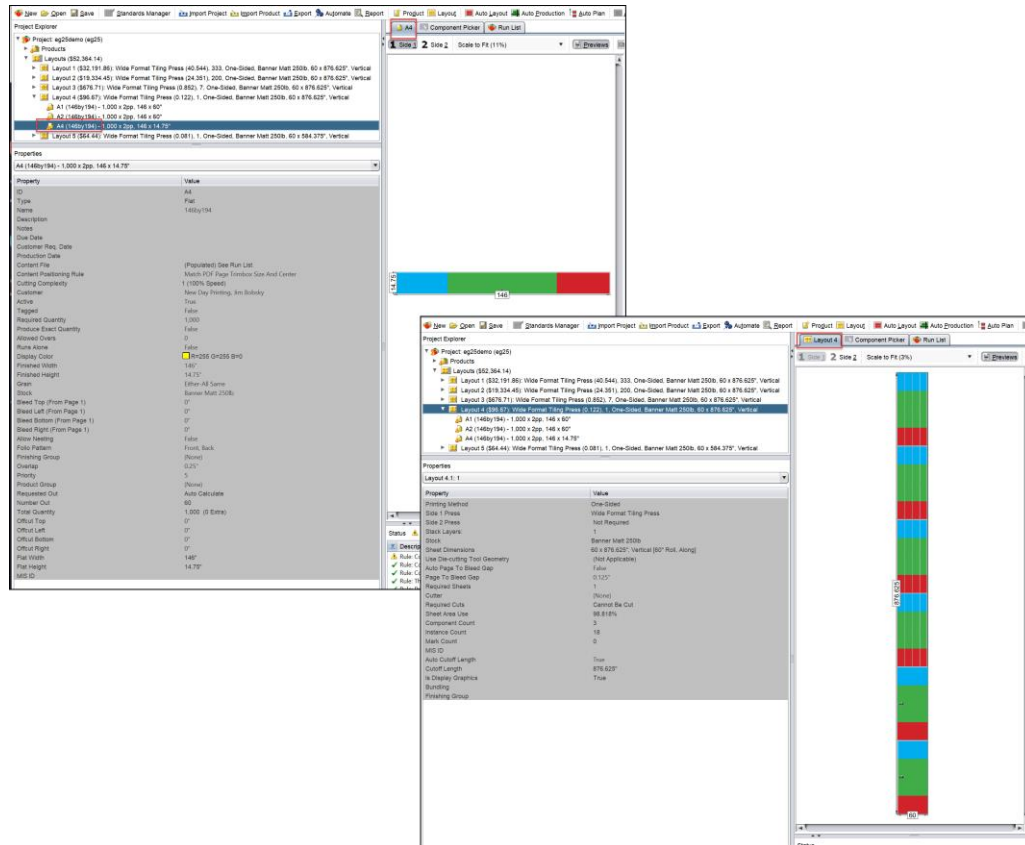


Working with Tiled Products

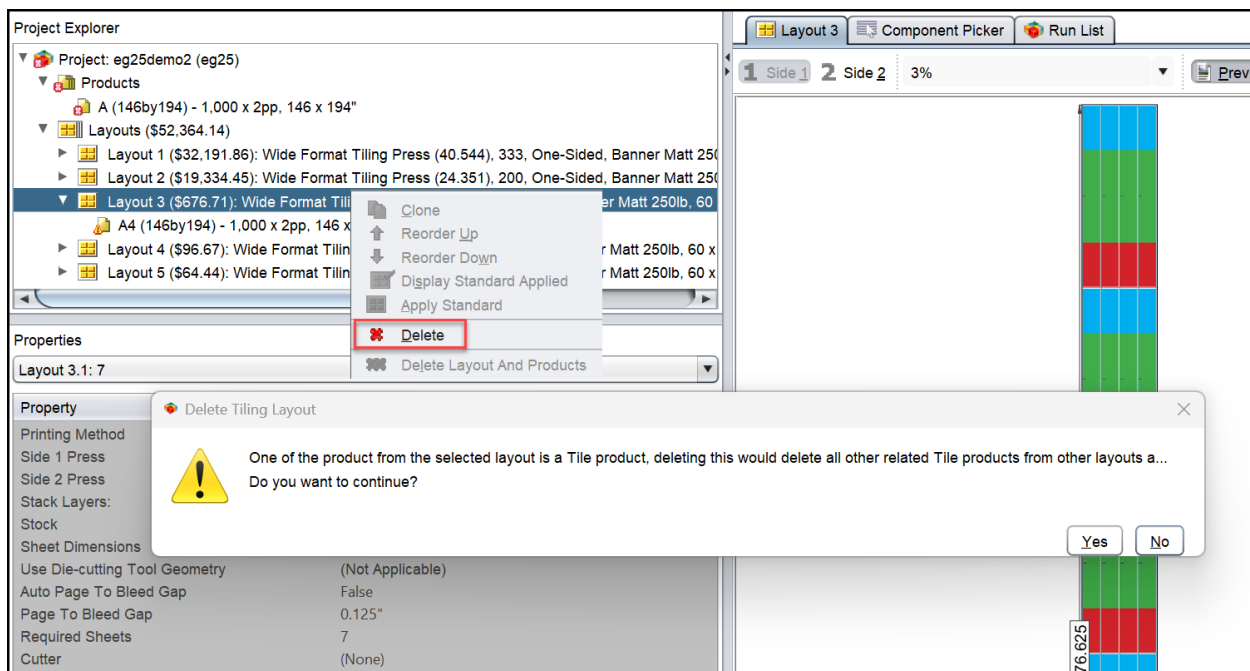
Changes can only be made to Tiled Product properties at Product level:



If you select a Layout or Layout Component the properties are greyed out and cannot be modified.



The right-click menu is disabled from Tiled Product Layout components. If you **Delete** a Layout which contains a Tiled Product, all Layouts for that product are removed:



Enhancements

Webs and Binding Method added to Multi-Web Presses

Reference METRIX-19060

Multi-Web support now considers the number of webs used and the binding assembly method to ensure correct pagination for more scenarios. When you select a **Binding Machine** that is configured for multi-web press, you can now:

1. Select the **Number of Webs**.
2. Select the **Binding Assembly Method**, either:
 - Saddled.
 - Side-By-Side.

The screenshot shows the 'New Product' dialog box. On the left, under 'Select Your Product Type', the 'Bound' option is selected. On the right, the configuration fields are as follows:

- Project ID:** MWBook
- Project Name:** MWBook1
- Project Type:** Production
- Product Name:** MWBookFr
- Required Quantity:** 500
- Grain:** Vertical
- Customer:** New Day Printing, Jim Bobsky
- Stock:** House Stock - 50# Text 75gsm
- Finished Size:** Letter Portrait, 8.5 x 11 (Width: 8.5, Height: 11)
- Number Of Pages:** 186
- Largest Text Components:** 6
- Binding Machine:** Multi Web 1 (highlighted with a red box)
- Number Of Webs:** 3 (marked with a red circle and number 1)
- Binding Assembly Method:** Saddled (marked with a red circle and number 2)

At the bottom right, there are 'Create' and 'Cancel' buttons.

Security Enhancement - Apache ActiveMQ Upgrade

Reference METRIX-19535

As part of our ongoing security policy, the Metrix installation package has been updated to Apache ActiveMQ JAR version 5.19.0.

Support for Azure/Entra's Graph API

Reference METRIX-19486

Metrix now includes integration to Azure/Entra's Graph API for applications to send emails using OAuth 2.0 for improved security and authorization. For further information see [Azure/Entra Graph API Configuration Guide](#).

Windows Server 2025

Reference METRIX-19558

Metrix is certified for Windows Server 2025 and Microsoft SQL Server 2025.

Resolved Issues

Auto Plan - Maximum Products per Layout

Support Reference METRIX-19518

In a specific circumstance (when the **Algorithm > Same Size** was selected and a **Maximum Products per Layout** value was defined) Auto Plan the maximum value was not respected. This has been resolved.

Auto Plan – With Die Cutting Tool

Support Reference METRIX-19517

In a specific circumstance (when the **Use Die-cutting Tool Geometry** Setting was enabled), Auto Plan would continue to run. This has been resolved.

Auto Plan – Metrix Automation Server

Support Reference METRIX-19248

In rare circumstances, when ganging two of the same flat product items whilst the sheet space is nearly at maximum capacity, the items are planned on separate layouts, not achieving the most optimized sheet usage. This has been resolved.

Export – Specific Imposed Layout

Support Reference METRIX-18992

In a specific circumstance (when exporting a selected layout number as an imposed PDF with the **Separate File for Each Layout** option selected) the output PDF files generated had incorrect layout numbers in their filenames. This has been resolved.

Mac OS Copy Keyboard Shortcut

Support Reference METRIX-19007

In some circumstances (after upgrading Metrix to a specific MacOS operating system version) the **CMD+C** keyboard shortcut was not pasting information to other applications. Although a work round was available, this has been resolved with a permanent solution.
