

What's New in Enfocus Connect 11

New features covered in Enfocus Connect 11 ALL/YOU

Support for MacOSX 10.8

Enfocus Connect now officially supports MacOSX 10.8 (Mountain Lion).

Support for Windows 8

Enfocus Connect now officially supports this operating system from Microsoft, both 32-bit and 64-bit running in 32-bit mode.

Support for Creative Suite 6

Enfocus Connect now has plug-in support for the InDesign and Illustrator 6 .

New single user version (Connect YOU)

Connect 11 now comes in two versions, Connect YOU for single workstations and Connect ALL that allows for unlimited distribution of Connectors to internal or external clients.

Connect Application Enhancements

Enhanced Connector Project management tools.

Connect 11 provides the capability to manage Connect Projects with Project Groups (folders), export projects, and import projects. In addition, any project can be designated as the default project from which all new projects are defined.

New delivery methods.

Connect 11 now supports delivery of job files to HTTP servers and E-mail addresses.

New built-in PDF creation.

Connect 11 now includes the capability to define a virtual printer that uses the Adobe Normalizer to convert postscript to PDF's based on settings defined in an Adobe PDF Preset.

New plug-in support for the Creative Suite 5, 5.5, 6.0.

New plug-ins for the Creative Suite allow layouts from InDesign and Illustrator to be natively exported as a PDF using the predefined Adobe PDF settings directly into a Connect Connector workflow.

New Electronic Job Tickets

Connect 11 now allows for custom XML, TXT, or CSV job tickets to be defined and used within a Connector.

Enfocus PitStop 11 Supported

Connect now supports Action Lists, and Preflight Profiles from PitStop Pro and Server 11.

Enfocus PitStop 11 Smart Preflight Support

Variable Sets from PitStop 11 can now be used in conjunction with Job Tickets to define preflight variables.

Enhanced Preflight Controls over Connector user experience

Connect 11 now offers additional control over the presentation of preflight results to users of the Connectors. Preflight results (pass or fail) can now be hidden from the Connector user.

Preflight visual identification

Connect 11 now provides a simple text identifier option in the file name for when a PDF file passes preflight or fails the preflight process.

Preflight report measurement control

Under the Connect preferences, you can control what the default measurement system that will be used in the creation of a preflight report.

PDF creation local saving control

The capability to save a newly created PDF in a Connector can be disabled for the user of a Connector.

Delivery file size limit

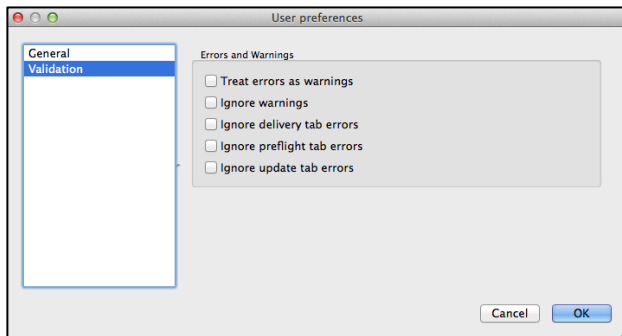
A file size limit can be defined for any files being delivered.

Delivery E-mail notifications

Notification emails can be configured to external E-mail addresses when a job is successfully delivered in a Connector.

Connector creation error and warning overrides (Preferences)

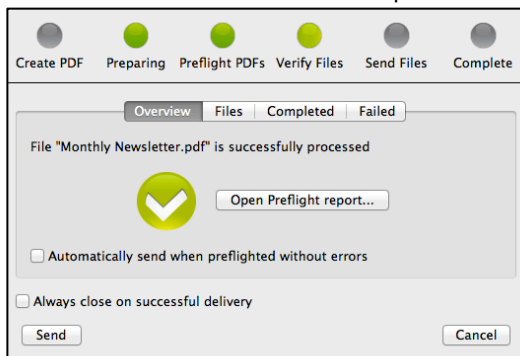
Verification errors and warnings when a Connector is created can be ignored allowing the Connector creation to continue.



Connector Enhancements

New visual progress

Connectors now show the number of processes defined in a Connector and the progress of a file as it moves from one process to the next.



File size of the Connector enhancements

Code was optimized in Connect 11 to only include code needed for the functions defined within a Connector.

Proxy and Firewall overrides for E-mail and delivery methods (Preferences)

Users of a Connector can make changes to proxy's, E-mail SMTP servers and other network settings to allow the Connector to work behind a firewall.

